



PRINCE Dr. K.VASUDEVAN COLLEGE OF ENGINEERING AND TECHNOLOGY

(Approved by AICTE, Affiliated to Anna University & ISO 9001:2015 Certified Institution)
Medavakkam-Mambakkam Main Road, Ponmar, Chennai-600127

STUDENT FEEDBACK ON SYLLABUS – ANALYSIS REPORT

Academic Year

2017-18

Department

Electronics and Communication Engineering

Number of Respondents

66

Rate the curriculum/ Syllabus on the following Points

S. No	Feedback on Syllabus	Strongly agree	Agree	Neutral	Disagree	Strongly Disagree
		5	4	3	2	1
1	Whether the syllabus is career oriented?	47	17	2	0	0
2	Whether the course was well structured to achieve course outcomes?	48	14	3	1	0
3	Rate the size of the syllabus in terms of student's load?	43	19	3	1	0
4	Whether the course objective is clear?	41	21	3	1	0
5	Are the books prescribed as a text book reference book in related to syllabus?	43	18	4	0	1
6	Whether the syllabus is relevant to real world problems?	40	23	2	1	0
7	Whether the syllabus is covered with industrial standards?	41	21	3	1	0
8	Is the syllabus in calculated necessary ethical values and concern for the society?	40	20	4	1	1

PRINCIPAL
PRINCE DR. K. VASUDEVAN COLLEGE OF
ENGINEERING AND TECHNOLOGY
PONMAR, CHENNAI-600 127.



PRINCE Dr. K.VASUDEVAN COLLEGE OF ENGINEERING AND TECHNOLOGY

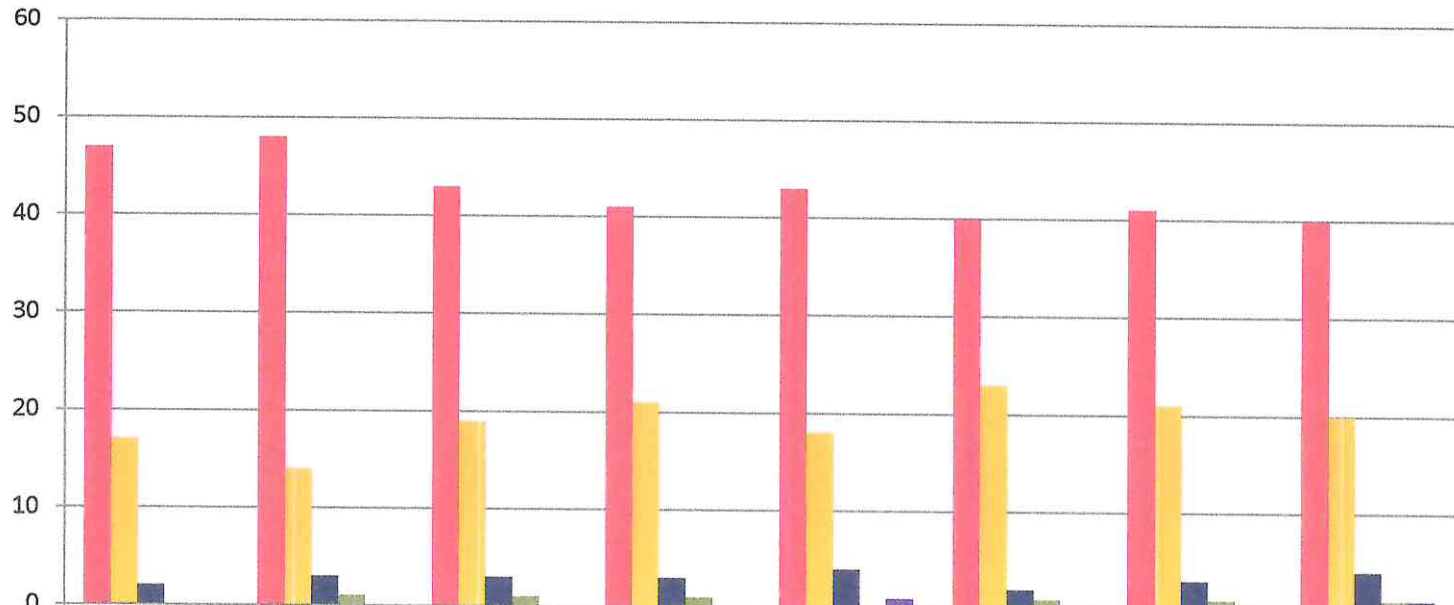
(Approved by AICTE, Affiliated to Anna University & ISO 9001:2015 Certified Institution)

Medavakkam-Mambakkam Main Road, Ponmar, Chennai-600127

STUDENT FEEDBACK ON SYLLABUS - 2017-2018

Electronics and Communication Engineering

(NUMBER OF RESPONDENTS - 66)



	Q1	Q2	Q3	Q4	Q5	Q6	Q7	Q8
Strongly agree	47	48	43	41	43	40	41	40
Agree	17	14	19	21	18	23	21	20
Neutral	2	3	3	3	4	2	3	4
Disagree	0	1	1	1	0	1	1	1
Strongly Disagree	0	0	0	0	1	0	0	1

[Handwritten Signature]

PRINCIPAL
PRINCE DR. K. VASUDEVAN COLLEGE OF
ENGINEERING AND TECHNOLOGY
PONMAR, CHENNAI-600 127.



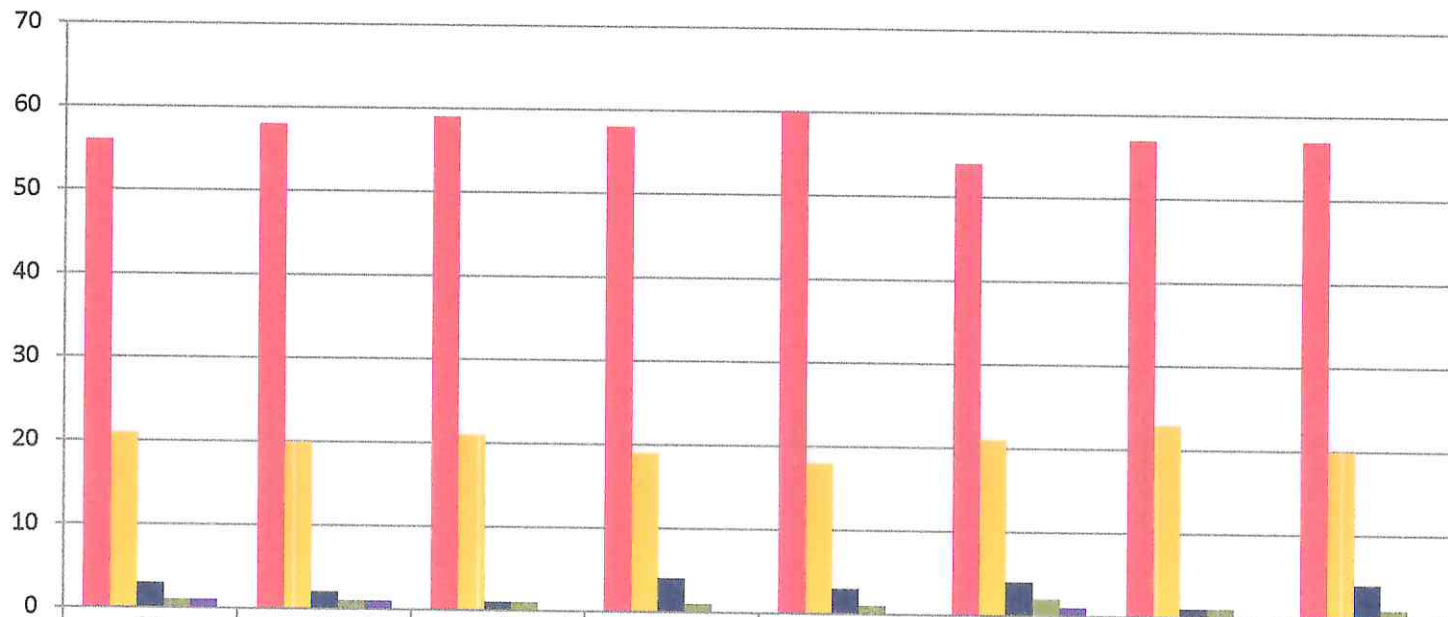
PRINCE Dr. K.VASUDEVAN COLLEGE OF ENGINEERING AND TECHNOLOGY

(Approved by AICTE, Affiliated to Anna University & ISO 9001:2015 Certified Institution)
Medavakkam-Mambakkam Main Road, Ponmar, Chennai-600127

STUDENT FEEDBACK ON SYLLABUS - 2017-2018

Computer Science and Engineering

(NUMBER OF RESPONDENTS - 82)



	Q1	Q2	Q3	Q4	Q5	Q6	Q7	Q8
Strongly agree	56	58	59	58	60	54	57	57
Agree	21	20	21	19	18	21	23	20
Neutral	3	2	1	4	3	4	1	4
Disagree	1	1	1	1	1	2	1	1
Strongly Disagree	1	1	0	0	0	1	0	0

(Signature)

PRINCIPAL

PRINCE DR. K. VASUDEVAN COLLEGE OF ENGINEERING AND TECHNOLOGY



PRINCE Dr. K.VASUDEVAN COLLEGE OF ENGINEERING AND TECHNOLOGY

(Approved by AICTE, Affiliated to Anna University & ISO 9001:2015 Certified Institution)

Medavakkam-Mambakkam Main Road, Ponmar, Chennai-600127

STUDENT FEEDBACK ON SYLLABUS – ANALYSIS REPORT

Academic Year

2017-18

Department

Electrical and Electronics Engineering

Number of Respondents

25

Rate the curriculum/ Syllabus on the following Points

S. No	Feedback on Syllabus	Strongly agree	Agree	Neutral	Disagree	Strongly Disagree
		5	4	3	2	1
1	Whether the syllabus is career oriented?	20	4	1	0	0
2	Whether the course was well structured to achieve course outcomes?	17	5	2	0	1
3	Rate the size of the syllabus in terms of student's load?	20	4	0	1	0
4	Whether the course objective is clear?	19	5	0	1	0
5	Are the books prescribed as a text book reference book in related to syllabus?	19	4	1	0	1
6	Whether the syllabus is relevant to real world problems?	20	5	0	0	0
7	Whether the syllabus is covered with industrial standards?	20	4	0	1	0
8	Is the syllabus in calculated necessary ethical values and concern for the society?	21	4	0	0	0

PRINCIPAL
PRINCE DR. K. VASUDEVAN COLLEGE OF
ENGINEERING AND TECHNOLOGY
PONMAR, CHENNAI 600127



PRINCE Dr. K. VASUDEVAN COLLEGE OF ENGINEERING AND TECHNOLOGY

(Approved by AICTE, Affiliated to Anna University & ISO 9001:2015 Certified Institution)

Medavakkam-Mambakkam Main Road, Ponmar, Chennai-600127

STUDENT FEEDBACK ON SYLLABUS – ANALYSIS REPORT

Academic Year 2017-18
Department Mechanical Engineering
Number of Respondents 75

Rate the curriculum/ Syllabus on the following Points

S. No	Feedback on Syllabus	Strongly agree	Agree	Neutral	Disagree	Strongly Disagree
		5	4	3	2	1
1	Whether the syllabus is career oriented?	53	17	3	1	1
2	Whether the course was well structured to achieve course outcomes?	54	17	2	1	1
3	Rate the size of the syllabus in terms of student's load?	49	24	1	1	0
4	Whether the course objective is clear?	53	17	4	1	0
5	Are the books prescribed as a text book reference book in related to syllabus?	46	25	3	1	0
6	Whether the syllabus is relevant to real world problems?	49	21	4	0	1
7	Whether the syllabus is covered with industrial standards?	52	21	1	1	0
8	Is the syllabus in calculated necessary ethical values and concern for the society?	52	18	4	1	0

PRINCIPAL
PRINCE DR. K. VASUDEVAN COLLEGE OF
ENGINEERING AND TECHNOLOGY
PONMAR, CHENNAI-600 127,



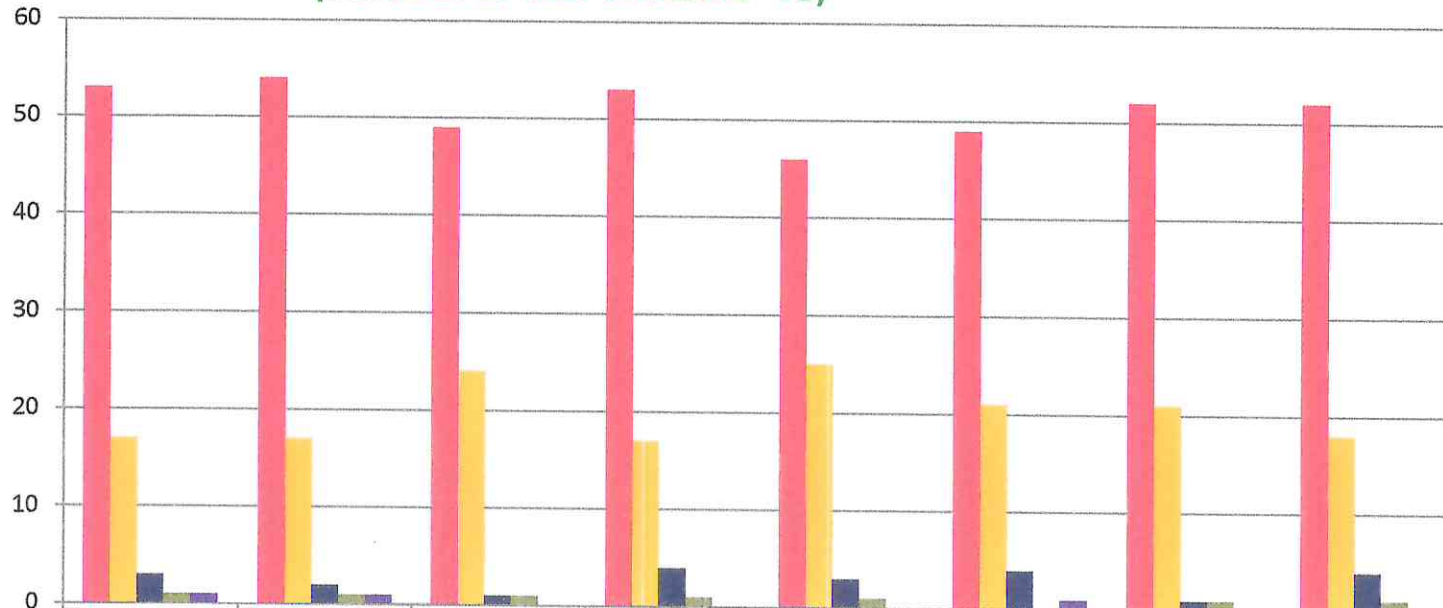
PRINCE Dr. K. VASUDEVAN COLLEGE OF ENGINEERING AND TECHNOLOGY

(Approved by AICTE, Affiliated to Anna University & ISO 9001:2015 Certified Institution)
Medavakkam-Mambakkam Main Road, Ponmar, Chennai-600127

STUDENT FEEDBACK ON SYLLABUS - 2017-2018

Mechanical Engineering

(NUMBER OF RESPONDENTS - 75)



	Q1	Q2	Q3	Q4	Q5	Q6	Q7	Q8
Strongly agree	53	54	49	53	46	49	52	52
Agree	17	17	24	17	25	21	21	18
Neutral	3	2	1	4	3	4	1	4
Disagree	1	1	1	1	1	0	1	1
Strongly Disagree	1	1	0	0	0	1	0	0

(Signature)

PRINCIPAL
PRINCE DR. K. VASUDEVAN COLLEGE OF
ENGINEERING AND TECHNOLOGY
PONMAR, CHENNAI-600 127.